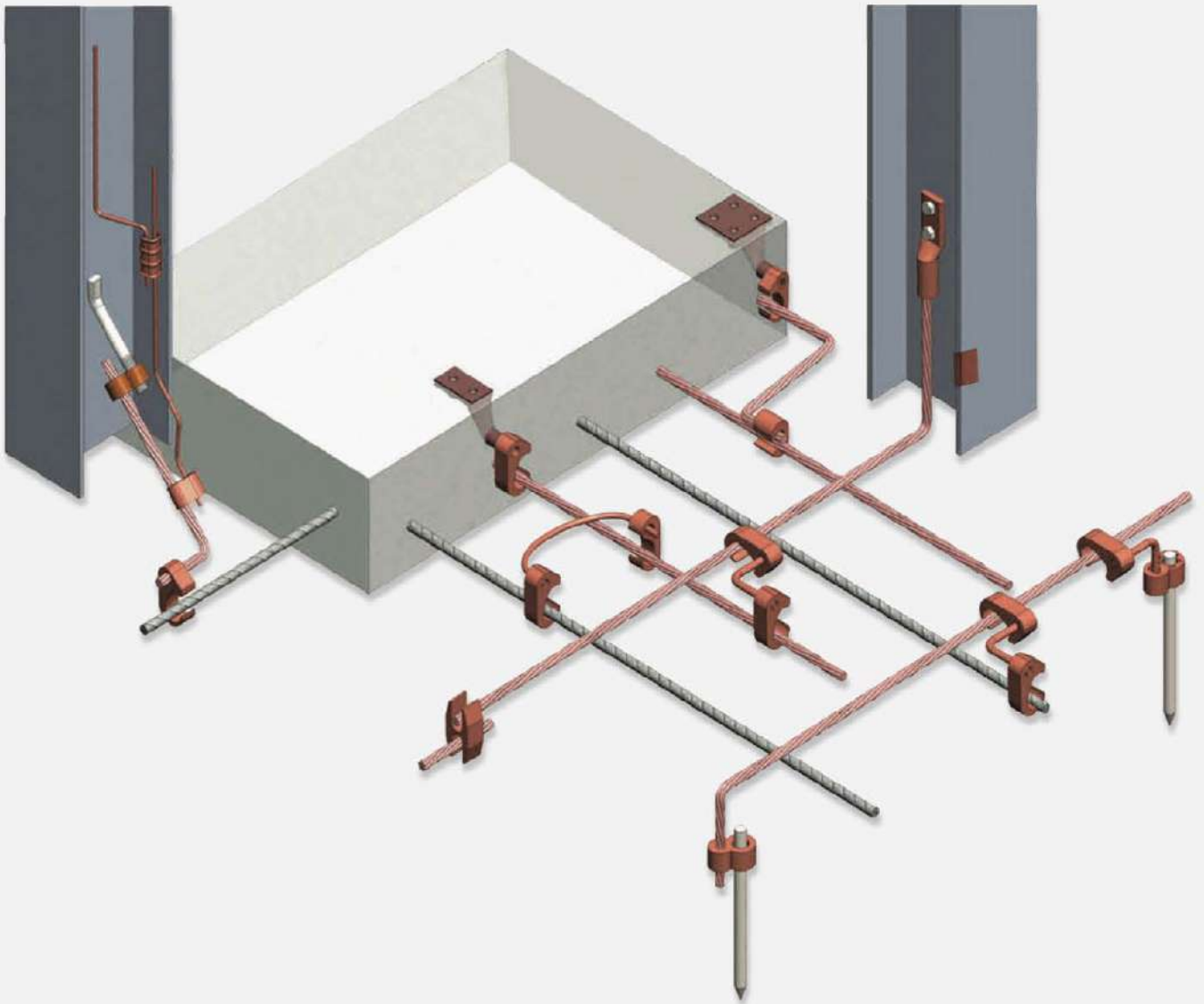
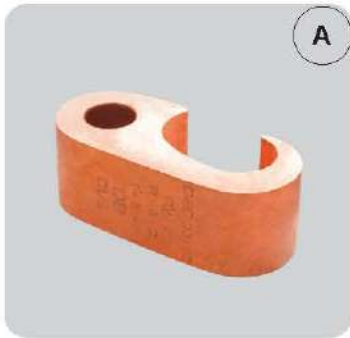


# Irreversible Grounding Products

## Irreversible Grounding Products



# Irreversible Grounding Products



# Irreversible Grounding

## Irreversible Compression Connectors Fig 6 Type

### Features

- Tin plating for superior protection against corrosion
- Inspection hole to ensure full cable insertion

### Applications

- Use to wire termination
- Up to 35 kV circuits

### Electrical Rating

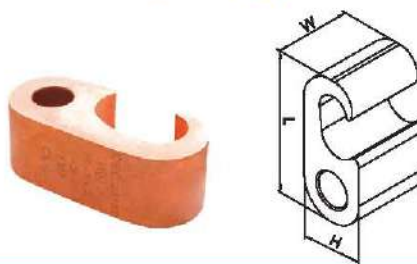
- Voltage : 600 V
- Temp : 90°C

### Material

- Copper

### Finish

- Tin plated



Catalog ID	Conductor Range		Crimping Tool & Dies		Dimensions In Inches		
	Run	Tap	Burndy- Y35, Y39, Pat-750, Pat-750LI	Stripping	# Of Crimp	L	W
23154	1/0 STR-250 MCM OR ROD 1/2-5/8	#4 SOL- #2 STR	U997	3	3	2.09	2.31
23155		1/0 STR-2/0 STR	U997			2.09	2.31
23156		3/0 STR-250 KCMIL	U997			2.09	2.31
23153	250 MCM-500 MCM & ROD 5/8-3/4	#4 SOL- #2 STR	U998			2.58	2.31
23157		#4 SOL- #2 STR	U998			2.58	2.31
23158		1/0 STR-2/0 STR	U998			2.58	2.31
23159		3/0 STR-250 KCMIL	U998			2.58	2.31
23160		350 KCMIL-250KCMIL	U-1011			2.89	2.74

## Irreversible Compression Connectors Fig 6 Type

### Features

- Tin plating for superior protection against corrosion
- Inspection hole to ensure full cable insertion

### Applications

- Use to wire termination
- Up to 35 kV circuits

### Electrical Rating

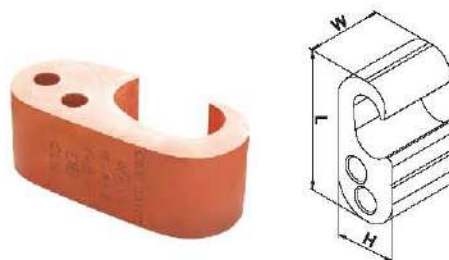
- Voltage : 600 V
- Temp : 90°C

### Material

- Copper

### Finish

- Tin plated



Catalog ID	Conductor Range			Rod to Cond.	Rebar to Cond.	Crimping Tool & Dies	Dimensions In Inches		
	Run	Tap	Tap	Run	Tap	Burndy- Y35, Y39, Pat-750, Pat-750LI	Strip	L	W
23171	6-2 STR	6-2 STR	-	-	6-2 STR		1	1.4	0.75
23172	6-2 STR	8-6 STR	-	-	8-6 STR			1.4	0.75
23173	1/0-250 MCM	8-6 STR	8-6 STR	Rebar Size 3/8 To 1/2	8-6 STR	U997		2.09	0.75
23174	1/0-250 MCM	4-2 STR	4-2 STR	Rod 1/2 To 5/8	4-2 STR	U997		2.09	0.75
23175	1/0-250 MCM	1/0-2/0 STR	1/0-2/0 STR		1/0-2/0 STR	U997		2.09	0.75
23176	1/0-250 MCM	3/0-250 MCM	3/0-250 MCM		3/0-250 MCM	U998		2.09	0.75
23177	250-500 MCM	4-2 STR	4-2 STR	Rebar Size 5/8 To Rod 5/8 To 3/4		U998		2.58	0.75
23178	250-500 MCM	1/0-2/0 STR	1/0-2/0 STR		1/0-2/0 STR	U998		2.58	0.75
23179	250-500 MCM	3/0-250 MCM	3/0-250 MCM		3/0-250 MCM	U998		2.58	0.75
23180	1/0-250MCM	350-500 MCM	3/0-500 MCM		3/0-500 MCM	U-1011		2.58	0.75

# Irreversible Grounding

## Irreversible Compression Connectors Fig 8 Type

### Features

- Tin plating for superior protection against corrosion
- Inspection hole to ensure full cable insertion

### Applications

- Use to wire termination
- Up to 35 kV circuits

### Electrical Rating

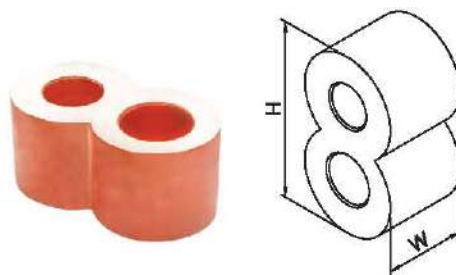
- Voltage : 600 V
- Temp : 90°C

### Material

- Copper

### Finish

- Tin plated



Catalog ID	Commercial Cu Cable Range	Nom Ground Rod Dia	Crimping Tool & Dies			Strip LT	#Of Crimp	Dim. In Inches	
			Burndy- Y 35, Y 39, Pat-750, Pat-750LI	Panduit Ct2931 &	TAB12 PCR-LT			L	W
23131	2/0 STR	1/2	U-39RT/24	CD-920-750	15G121R	1	1	1.40	0.75
23132		5/8	U-39RT/24	CD-920-750	15G121R	1		2.09	2.31
23133		3/4	U-39RT/24	CD-920-750	15G121R	1		2.09	2.31
23134		1	U-39RT/24	CD-920-750	15G121R	1		2.09	2.31
23135	2-250 MCM	1/2	U-39RT/24	CD-920-750	15G121R	1		2.58	2.31
23136		5/8	U-39RT/24	CD-920-750	15G121R	1		2.58	2.31
23136A		5/8	U-39RT/24	CD-920-750	15G121R	1		2.58	2.31
23137		3/4	U-39RT/24	CD-920-750	15G121R	1		2.89	2.31
23138	250 MCM-500 MCM	1	U-39RT/24	CD-920-750	15G121R	1		1.40	0.75
23139		5/8	U-39RT/24	CD-920-750	15G121R	1		2.09	0.75
23140		3/4	U-39RT/24	CD-920-750	15G121R	1		2.09	0.75
23141		1	U-39RT/24	CD-920-750	15G121R	1		2.09	0.75

## Irreversible Compression Connectors Fig 8 Type

### Features

- Tin plating for superior protection against corrosion
- Inspection hole to ensure full cable insertion

### Applications

- Use to wire termination
- Up to 35 kV circuits

### Electrical Rating

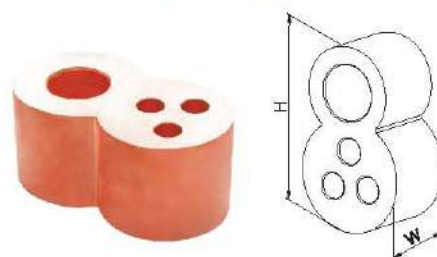
- Voltage : 600 V
- Temp : 90°C

### Material

- Copper

### Finish

- Tin plated



Catalog ID	Commercial Cu Cable Range	Nom Ground Rod Dia	Crimping Tool	Strip LT	#Of Crimp	Dim. In Inches	
			Burndy- Y-35, Y 39, Pat-750, Pat-750LI			L	W
23150	#2 SOL X 3	5/8	U-39RT/24	1	1	2.19	0.88

# Irreversible Grounding

## Irreversible Compression Connectors C-Taps

### Features

- Color coded for proper crimp die selection
- Low installation cost
- Compact size allows for easy taping and insulation of connection
- UL96 Listed for lightning protection

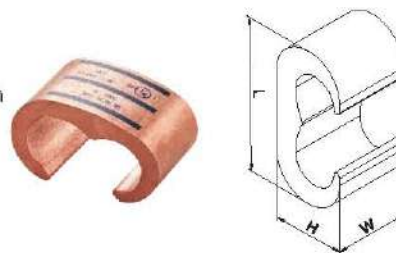
### Applications

- Applicable for direct burial
- Allows for 2 continuous parallel conductor

- Material**      **Finish**
- Copper      • Natural

### Electrical Rating

- Voltage : 600 V
- Temp : 90°C



Catalog ID	Conductor Range			Crimping Tool & Die Index Y750/Y35/ Y39, Pat750/Pat750LI Series Tools	Strip Lip	Dimension In Inches		
	CU Run	ROD	CU Tap			L	W	H
24101	6-2 STR	1/4	6 SOL-2 STR	UC	3/4	1.16	0.54	0.75
24102	1-2/0 STR	3/8	6 SOL-2 STR	U0	3/4	1.41	0.72	0.75
24103	1-2/0 STR	3/8	1-2/0 STR	U0	7/8	1.54	0.74	0.75
24104	3/0-250 MCM	1/2-5/8	6-2/0 STR	U997	7/8	1.97	0.93	0.75
24105	3/0-250 MCM	1/2-5/8	3/0-250 STR	U997	11/16	2.06	0.94	0.88
24106	3/0-250 MCM	3/4	6-2/0 STR	U-1011	11/16	2.42	1.24	0.88
24107	3/0-250 MCM	-	6-2/0 STR	U-1011	11/16	2.70	1.34	0.88
24108	3/0-250 MCM	-	3/0-250 MCM	U-1011	11/16	2.90	1.34	1.10

## Irreversible Compression Connectors C-Taps

### Features

- Pre filled with anti oxidant
- Compact size allows for easy taping and insulation of connection
- UL96 Listed for lightning protection

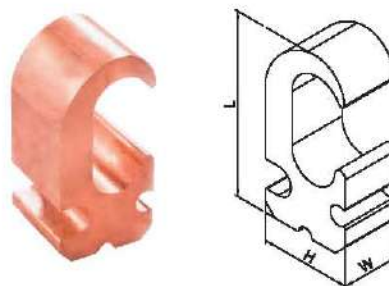
### Applications

- Applicable for direct burial
- Allows for 2 continuous parallel conductors

- Material**      **Finish**
- Copper      • Natural

### Electrical Rating

- Voltage : 600 V
- Temp : 90°C



Catalog ID	Conductor Range			Crimping Tool & Die Index Y750/Y35/ Y39, Pat750/Pat750LI Series Tools	Strip Lip	Dimension In Inches		
	CU Run	ROD	CU Tap			L	W	H
24411	1/2-5/8	2 STR	6 SOL/ STR	U997	3/4	1.90	0.94	0.75
24411T	1/2-5/8	2 STR	6 SOL/ STR	U997	3/4	1.90	0.94	0.75

H-C irreversible compression ground tap can be used as a ground rod tap connector for both continuous run and tapping applications. An open groove allows ground rod to be connected to a continuous run or tap. The second groove is for a tap only.

# Irreversible Grounding

## Irreversible Compression Connectors C-Taps

### Features

- Color coded for proper crimp die selection
- Low installation cost
- Compact size allows for easy taping and insulation of connection
- UL96 Listed for lightning protection

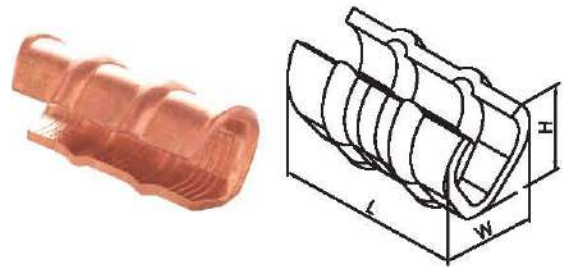
### Applications

- Applicable for direct burial
- Allows for 2 continuous parallel conductor

- Material**      **Finish**
- Copper              • Natural

### Electrical Rating

- Voltage : 600 V
- Temp : 90°C



Catalog ID	Conductor Range For Equal Main & Tap		Strip Length	Dimensions In Inches			Color Code
	Max Run	Min Run		L	W	W1	
23101	14 SOL	14-16 SOL/STR	1/2	0.32	0.34	0.29	RED
	12 STR	16-12 STR					
	10 STR	14 STR					
23102	10 STR	10 STR	5/8	0.37	0.38	0.36	BLUE
	8 STR	12 STR					
23103	10 STR	10-12 STR	5/8	0.37	0.46	0.43	GRAY
	8 STR	8-10 STR					
23104	4 STR	8-12 STR	1-1/4	1.17	0.65	0.48	BROWN
	6 STR	6-8 STR					
23105	4 STR	4-6 STR	1-1/4	1.19	0.66	0.55	GREEN
	3 STR	6-12 STR					
23106	4 STR	4 STR	1-1/4	1.17	0.76	0.58	PINK
	3 STR	4-6 STR					
	2 STR	6-12 STR					
23107	1 STR	4-12 STR	2	1.75	0.78	0.64	BLACK
	2 STR	4-6 STR					
	3 STR	4-3 STR					
23108	1/0 STR	4-12 STR	2	1.75	0.90	0.75	ORANGE
	1 STR	4-3 STR					
	2 STR	4-2 STR					
23109	2/0 STR	12-3 STR	2	1.75	0.96	0.80	PURPLE
	1/0 STR	3-2 STR					
	1 STR	1-2 STR					
23110	1/0 STR	1-1/0 STR	2	1.75	1.09	0.85	YELLOW
	2/0 STR	2-1 STR					
	3/0 STR	12-2 STR					

# Irreversible Grounding

## Irreversible Compression Connectors H-Taps

### Features

- Pre filled with anti oxidant
- Compact size allows for easy taping and insulation of connection
- UL96 Listed for lightning protection

### Applications

- Applicable for direct burial
- Allows for 2 continuous parallel conductor

### Electrical Rating

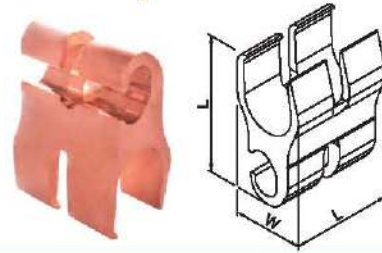
- Voltage : 600 V
- Temp : 90°C

### Material

- Copper

### Finish

- Natural



Catalog ID	Cond. Range Main	Tap - 1	Tap - 2	Tap - 3	Crimping Tool Burndy-Y46	Index Emboss Ent	Dimension In Inches		
							L	W	H
23191	6-2 STR	1/4	6 SOL-2 STR		UC	3/4	1.16	0.54	0.75

## Irreversible Compression Connectors H-Taps

### Features

- Pre filled with anti oxidant
- Compact size allows for easy taping and insulation of connection
- UL96 Listed for lightning protection

### Applications

- Applicable for direct burial
- Allows for 2 continuous parallel conductor

### Material

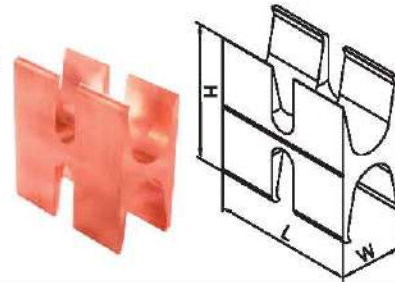
- Copper

### Finish

- Natural

### Electrical Rating

- Voltage : 600 V
- Temp : 90°C



Catalog ID	Cond. Range Main	Tap - 1	Tap - 2	Tap - 3	Crimping Tool Burndy-Y46	Index Emboss Ent	Dimension In Inches		
							L	W	H
23192	1[25]CU Clad Ground Rod 500 Kcmil Copper	500-350	-	-	PYFR(2)	K-R	2.94	2.97	1.50
23194	#6 Rebar 3/4 Ground Rod 400-250 Kcmil Cu	400-4/0	-	-	P1104	P1104	2.44	2.43	1.15

## Irreversible Compression Connectors C-Taps

### Features

- Pre filled with anti oxidant
- Compact size allows for easy taping and insulation of connection
- UL96 Listed for lightning protection

### Applications

- Applicable for direct burial
- Allows for 2 continuous parallel conductor

### Material

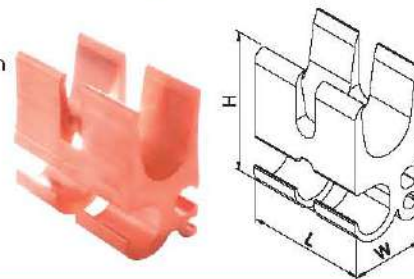
- Copper

### Finish

- Natural

### Electrical Rating

- Voltage : 600 V
- Temp : 90°C



Catalog ID	Cond. Range Main	Tap - 1	Tap - 2	Tap - 3	Crimping Tool Burndy-Y46	Index Emboss Ent	Dimension In Inches		
							L	W	H
23193	#6 Rebar 1[25]CU Ground Rod 500-350 Kcmil Cu	4/0-1/0	1-6	2-14	PYFR(2)	K-R	2.34	2.97	1.50
23195	#6 Rebar 3/4 Ground Rod 400-4/0 Kcmil Cu	3/0-1/0	1-4	8-14	P1104	P1104	2.44	2.23	13.13

# Irreversible Grounding

## Irreversible Compression Cross Connectors Fig 6-6

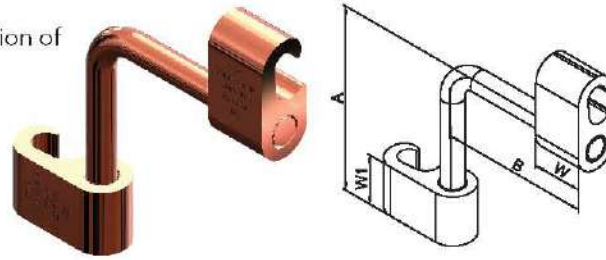
### Features

- Pre filled with anti oxidant
- Compact size allows for easy taping and insulation of connection
- UL96 Listed for lightning protection

### Applications

- Applicable for direct burial
- Allows for 2 continuous parallel conductor

Material	Finish	Electrical Rating
• Copper	• Natural	• Voltage : 600 V • Temp : 90°C



Catalog ID	Cond. To Conductor		Cable To Ground Rod		Crimping Tool & Dies	Dimension In Inches			
	Element-A	Element-B	Element-A	Element-B	Bumdy-Y 35, Y 39, Y 750, Pat-750, Pat-750LI	A	B	W	W1
23171-71	6 SOL-2 STR				U-0	2.53	2.53	0.75	0.75
23174-71	1 STR-250 KCMIL	6 SOL-2 STR	1/2-5/8 ROD	6 SOL-2 STR	U-997	5.53	2.53	0.75	0.75
23176-76	2 STR-250 KCMIL	2 STR-250 KCMIL		2 STR-250 KCMIL	U-997	2.63	2.63	0.75	0.75
23177-71		6 SOL-2 STR		6 SOL-2 STR	U-997	2.53	2.53	0.75	0.75
23178-76	250 KCMIL 500 KCMIL	2 STR-250 KCMIL	5/8-3/4 ROD	2 STR-250 KCMIL	U-997	2.63	2.63	0.75	0.75
23179-79		250 KCMIL 500 KCMIL		250 KCMIL 500 KCMIL	U-1011	2.94	2.94	1.10	1.10

## Irreversible Compression Cross Connectors Fig 8-6

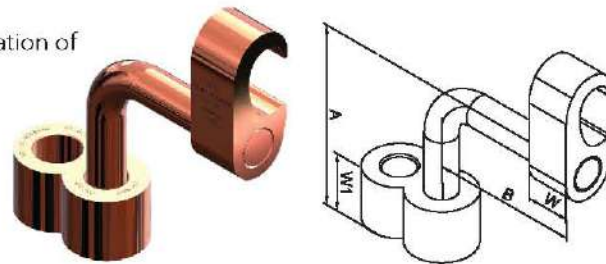
### Features

- Pre filled with anti oxidant
- Compact size allows for easy taping and insulation of connection
- UL96 Listed for lightning protection

### Applications

- Applicable for direct burial
- Allows for 2 continuous parallel conductor

Material	Finish	Electrical Rating
• Copper	• Natural	• Voltage : 600 V • Temp : 90°C



Catalog ID	Conductor Range	Ground Rod	Crimping Tool & Dies		Dimension In Inches			
	Element-A	Element-B	Element "A"	Element "B"	A	B	W	W1
23175-35	2 STR-250 KCMIL	1/20	U997(1)	PU998(1)	2.53	2.53	0.75	0.88
23179-36	250 KCMIL-500 KCMIL		PU998(1)	PU998(1)	2.53	2.53	1.10	0.88
23175-36	2 STR-250 KCMIL	5/8	U997(1)	PU998(1)	2.53	2.53	0.75	0.88
23179-37	250 KCMIL-500 KCMIL		PU998(1)	PU998(1)	2.53	2.53	1.10	0.88
23175-40	2 STR-250 KCMIL	3/4	U997(1)	PU998(1)	2.63	0.63	0.75	0.88
23179-40	250 KCMIL-500 KCMIL		PU998(1)	PU998(1)	2.63	0.63	1.10	0.88
13180-38	2 STR-250 KCMIL	1	U997(1)	PU998(1)	2.63	0.63	1.10	0.88
23180-41	250 KCMIL-500 KCMIL	1	PU998(1)	PU998(1)	2.63	0.63	1.10	0.88

# Irreversible Grounding

## Irreversible Compression Plate With Two Stud

### Features

- Pre filled with anti oxidant
- Compact size allows for easy taping and insulation of connection
- UL96 Listed for lightning protection

### Applications

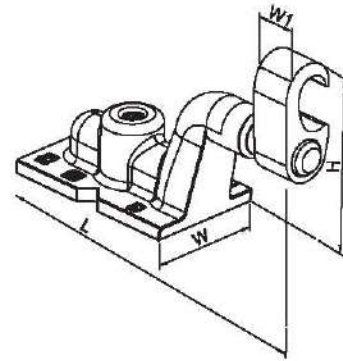
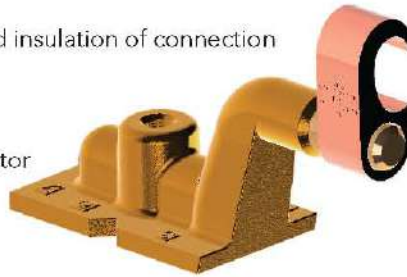
- Applicable for direct burial
- Allows for 2 continuous parallel conductor

### Material Finish

- Copper • Natural

### Electrical Rating

- Voltage : 600 V
- Temp : 90°C



Catalog ID	Conductor Range		Crimping Tool & Dies Burndy-Y 35, Y 39, Y 750, PAT-750, PAT-750LI	Strip-ping	Dimension In Inches			
	Run	Tap			A	H	W	W1
24301	2 STR-250 MCM	250 MCM	U997 (1)	1	5.79	3.62	2.00	0.75
24303	250 MCM-500 MCM	500 MCM	U1011 (3)	1	5.43	4.65	2.00	0.75

## Irreversible Grounding Plate With Four Stud

### Features

- Pre filled with anti oxidant
- Compact size allows for easy taping and insulation of connection
- UL96 Listed for lightning protection

### Applications

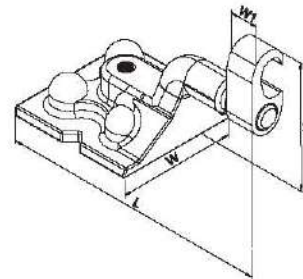
- Applicable for direct burial
- Allows for 2 continuous parallel conductor

### Material Finish

- Copper • Natural

### Electrical Rating

- Voltage : 600 V
- Temp : 90°C



Catalog ID	Conductor Range		Crimping Tool & Dies Burndy-Y 35, Y 39, Y 750, PAT-750, PAT-750LI	Strip-ping	Dimension In Inches			
	Run	Tap			A	H	W	W1
24302	2 STR-250 MCM	250 MCM	U997 (1)	1	5.79	3.62	3.24	0.75
24304	250 MCM-500 MCM	500 MCM	U1011 (3)	1	6.00	4.65	3.25	0.75

# Irreversible Grounding

## Irreversible Grounding Link

### Features

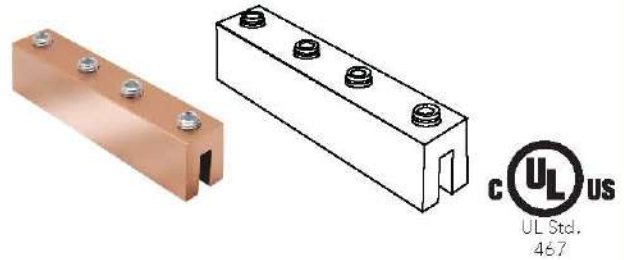
- Pre filled with anti oxidant
- Compact size allows for easy taping and insulation of connection
- UL96 Listed for lightning protection

### Applications

- Applicable for direct burial
- Allows for 2 continuous parallel conductor

### Material Finish Electrical Rating

- Copper
- Natural
- Voltage : 600 V
- Temp : 90°C



Catalog ID	Copper Conductor Range	I Beam Thickness	Length	Suggested OEC Terminal	Suggested OEC Terminal Conductor Size
<b>23501</b>	#2-4/0	0.25 to 0.34	3.0	98047ES	# 2 STR
				98050AS	#1/0 STR
				98053S	# 2/0 STR
<b>23503</b>	250-500 MCM		6.0	98102S	# 4/0 STR
				98104S	# 250MCM
				98108S	# 500MCM
<b>23505</b>	2-4/0 AWG	0.34 TO 0.40	3.0	98047ES	# 2 STR
				98050AS	#1/0 STR
				98053S	# 2/0 STR
<b>23507</b>	250-500 MCM		6.0	98102S	# 4/0 STR
				98104S	# 250MCM
				98108S	# 500MCM
<b>23509</b>	2-4/0 AWG	0.40 TO 0.46	3.0	98047ES	# 2 STR
				98050AS	#1/0 STR
				98053S	# 2/0 STR
<b>23511</b>	250-500 MCM		6.0	98102S	# 4/0 STR
				98104S	# 250MCM
				98108S	# 500MCM
<b>23513</b>	2-4/0 AWG	0.46 TO 0.55	3.0	98047ES	# 2 STR
				98050AS	#1/0 STR
				98053S	# 2/0 STR
<b>23515</b>	250-500 MCM		6.0	98102S	# 4/0 STR
				98104S	# 250MCM
				98108S	# 500MCM
<b>23517</b>	2-4/0 AWG	0.550 TO 0.6	3.0	98047ES	# 2 STR
				98050AS	#1/0 STR
				98053S	# 2/0 STR
				98102S	# 4/0 STR
				98108S	# 500MCM

# Irreversible Grounding

## Irreversible Grounding Link (Cont.)

Catalog ID	Copper Conductor Range	I Beam Thickness	Length	Suggested OEC Terminal	Suggested OEC Terminal Conductor Size
23520	2-4/0 AWG	0.61 TO 0.67	3.0	98047ES	# 2 STR
				98050AS	#1/0 STR
				98053S	# 2/0 STR
23522	250-500 MCM		6.0	98102S	# 4/0 STR
				98104S	# 250MCM
				98108S	# 500MCM

## Irreversible Grounding Link

### Features

- Pre filled with anti oxidant
- Compact size allows for easy taping and insulation of connection
- UL96 Listed for lightning protection

### Applications

- Applicable for direct burial
- Allows for 2 continuous parallel conductor

### Material

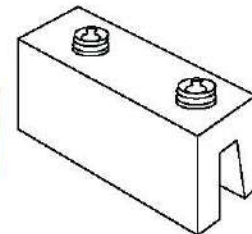
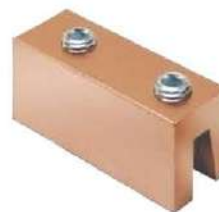
- Copper

### Finish

- Natural

### Electrical Rating

- Voltage : 600 V
- Temp : 90°C



Catalog ID	Copper Conductor Range	Length	I Beam Thickness	Suggested OEC Terminal	Suggested OEC Terminal Conductor Size
23502	#2-4/0	3.0	0.25 to 0.34	98047ES	# 2 STR
				98050AS	#1/0 STR
				98053S	# 2/0 STR
23504	250-500 MCM	6.0		98102S	# 4/0 STR
				98104S	# 250MCM
				98108S	# 500MCM
23506	2-4/0 AWG	3.0	0.34 to 0.40	98047ES	# 2 STR
				98050AS	#1/0 STR
				98053S	# 2/0 STR
23508	250-500 MCM	6.0		98102S	# 4/0 STR
				98104S	# 250MCM
				98108S	# 500MCM
23510	2-4/0 AWG	3.0	0.40 to 0.46	98047ES	# 2 STR
				98050AS	#1/0 STR
				98053S	# 2/0 STR
23512	250-500 MCM	6.0		98102S	# 4/0 STR
				98104S	# 250MCM
				98108S	# 500MCM
23514	2-4/0 AWG	3.0	0.46 to 0.55	98047ES	# 2 STR
				98050AS	#1/0 STR
				98053S	# 2/0 STR

# Irreversible Grounding

## Irreversible Grounding Link

Catalog ID	Copper Conductor Range	Length	I Beam Thickness	Suggested OEC Terminal	Suggested OEC Terminal Conductor Size
23516	250-500 MCM	6.0	0.46 to 0.55	98102S	# 4/0 STR
				98104S	# 250MCM
				98108S	# 500MCM
23518	2-4/0 AWG	3.0	0.55 to 0.61	98047ES	# 2 STR
				98050AS	#1/0 STR
				98053S	# 2/0 STR
23519	250-500 MCM			98102S	# 4/0 STR
				98108S	# 500MCM
23521	2-4/0 AWG	3.0	0.61 to 0.67	98047ES	# 2 STR
				98050AS	#1/0 STR
				98053S	# 2/0 STR
23523	250-500 MCM	6.0		98102S	# 4/0 STR
				98104S	# 250MCM
				98108S	# 500MCM

## Irreversible Compression Terminals

### Features

- Color coded die index and crimp marks
- Tin plating for corrosion resistance
- Connectors suitable for application upto 35 KV
- Dulal mounting holes for maximum secureness

### Applications

- Applicable for direct burial

### Material

- Copper

### Finish

- Tin plated

### Electrical Rating

- Voltage : 600 V
- Temp : 90°C



Catalog ID	Copper Conductor Size	Installation Tools Die Set Catalog ID and (Number of Crimps)	Suggested OEC Terminal Conductor Size			
			L	A1	B	T
98047ES	2 STR	U1CRT(1)	4.21	0.75	0.97	0.26
98050AS	1/0 STR	U27RT(1)	4.60	0.83	0.91	0.19
98052S	2/0 STR	U28RT(1)	4.38	0.83	0.97	0.26
98053S	3/0 STR	U29RT(1)	4.94	1.18	1.08	0.29
98102S	4/0 STR	U30RT (1)	4.94	1.18	1.22	0.30
98104S	250 KCMIL	U31RT (2)	4.94	1.18	1.28	0.34
98106S	350 KCMIL	U31RT (2)	5.00	1.18	1.62	0.43
98108S	500 KCMIL	U36RT (3)	5.42	1.48	1.72	0.40

# Irreversible Grounding

## Irreversible Compression Splices

### Features

- Pre filled with anti oxidant
- Compact size allows for easy taping and insulation of connection

### Applications

- Applicable for direct burial

### Material

- Copper

### Finish

- Tin plated

### Electrical Rating

- Voltage : 600 V
- Temp : 90°C



Catalog ID	Copper	Conductor	Size	Installation Tools Die Set Catalog ID and (Number of Crimps)	Suggested OEC Terminal Conductor Size	
					L	B
98114S		2 STR		U1CRT(1)	1.73	0.75
98116S		1/0 STR		U27RT(1)	1.89	0.83
98117S		2/0 STR		U28RT(1)	1.89	0.83
98118S		3/0 STR		U29RT(1)	2.59	1.18
98135S		4/0 STR		U30RT (1)	2.59	1.18
98136S		250 KCMIL		U31RT (2)	2.59	1.18
98138S		350 KCMIL		U31RT (2)	2.59	1.18
98140S		500 KCMIL		U36RT (3)	3.19	1.48

## Structural Steel Grounding

### Features

- Can be welded to steel surfaces quickly and easily
- Platted with pure copper finish

### Applications

- Knurled surfaces with copper plating for excellent mechanical gripping and electrical performance

### Material

- Copper

### Finish

- Natural



Catalog ID	Copper Conductor Size	Nominal Rod Size	Dimensions In Inches			
			L	B	A	T
24601	#6	1/4"	4.81	0.26	0.25	0.19
24603	#3	3/8"	5.81	0.39	0.38	0.25
24603	1/0	5/8"	5.68	0.57	0.56	0.38
2404	2/0	3/4"	5.81	0.76	0.75	0.51

# Irreversible Grounding

## Static Grounding Receptacle

### Features

- Designed for static grounding of equipment connected to the ground grid with Irreversible compression connectors

### Applications

- Applicable for direct burial

### Material

- Bronze

### Finish

- Natural



Catalog ID	Dimensions In Inches			
	A	B	C	H
24701	2.75	0.75	0.56	5.50

## Static Grounding Receptacle

### Features

- Designed for static grounding of equipment connected to the ground grid with irreversible compression connectors

### Applications

- Applicable for direct burial

### Material

- Bronze

### Finish

- Natural



Catalog ID	Dimensions In Inches			
	A	B	C	H
24701	2.75	0.75	0.56	6.50